



Shawnee Tomorrow | *defined*

Created in 1989 by the Shawnee Chamber of Commerce, this leadership program is strategically designed to offer the leaders of tomorrow a behind-the-scenes advantage of the critical issues and challenges facing Shawnee. Being purpose driven to create awareness, appreciation and action in the community, the program's product is an audience of developed individuals assuming leadership roles within the Shawnee community, Johnson County, the state of Kansas and beyond.

2012 Steering Committee

MeLissa Trujillo | Chair

CoreFirst Bank & Trust
Class of 2009

Danielle Browning | Co Chair

KCP&L
Class of 2004

Rebecca Bailey

Shawnee Mission Medical Center
Class of 2010

Dana Blubaugh

Pittsburg State University
Class of 2006

Karen Boyd

Johnson County Christmas Bureau
Class of 2006

Rob Dinneen

Shawnee Mission Medical Center
Class of 2011

Paul Lindstrom

City of Shawnee
Class of 2011

Jim Neighbor

Class of 2010

Jean Nelson

Porter Funeral Homes & Crematory
Class of 2004

Justin Nichols

Lathrop & Gage, L.L.P.
Class of 2007

Aaron Ridenour

Capitol Federal Savings
Class of 2009

Mary Taylor

Shawnee Chamber of Commerce
Class of 2005

Who is eligible? | *are you?*

Each class is comprised of 20 individuals who live and/or work in the Shawnee area. Individuals of all backgrounds are encouraged to apply.

Become a leader | *make the commitment*

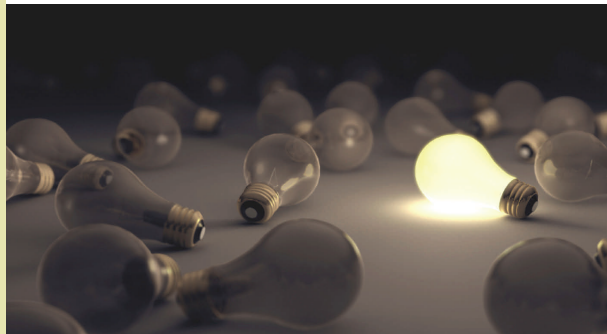
The program is from January to May with eight, class sessions. Class sessions are full days, scheduled during the week. Class assignments and special, group projects may require time outside of the workday. A commitment to 100 percent attendance is

expected from all participants in order to graduate. Sessions are designed to be interactive and stimulating. Participants will be introduced to leaders within each field, creating an awareness level for sources of information materials and individuals key to the community. On-site visits, small-group discussions, leadership-development strategies and case studies will be utilized. The curriculum is designed to inspire analysis, inquiry and to explore public-policy alternatives of current community issues.

Act now | *apply today*

Contact the Chamber, 913.631.6545, to either ask for an application or nominate an individual. The deadline for applications is Nov. 18, 2011. For a printable application and more information, please visit www.ShawneeKSChamber.com.

The tuition is \$800, covering all expenses and materials. One, \$400 scholarship will be awarded at the discretion of the committee.



Leadership Program Class of 2012

Class sessions from 8 a.m. to 5 p.m.
| Unless noted otherwise |

New Class & Alumni Reception

Thursday, January 12

Session 1 | Orientation/Team Building

Friday, January 13 at the Shawnee Civic Centre,
13817 Johnson Drive, Shawnee, KS 66216

Session 2 | City Government/Economic Development

Thursday, February 2

Session 3 | Community Involvement Day

Wednesday, 15

Session 4 | State Government Day

Wednesday, February 29

Session 5 | Health Care

Thursday, March 22

Session 6 | County Government Day

Thursday, April 5

Session 7 | Education Day

Tuesday, April 24th

Session 8 | Regionalism Day

Tuesday, May 8

Half-day, Wrap-Up Session

Thursday, May 24

Graduation Luncheon

Wednesday, June 13

Community Project

TBD

**Required, outside-class assignment:
attend one (1) Civic or City Council meeting.**